

SUSTAINABILITY:



The Environmental Component

2012 INITIATIVES REQUIRING MINIMUM EFFORT

Order of Priority	Proposed Initiatives	Estimated Cost	Notes
1	Tumblers	\$ 68,200	5,143 HO associates; \$11K annual recurring (based on 900 new hires/year)
2	Energy audit	\$ 125,000	780,000 sqft/yr over 3 year period (total 2.3M sqft, StLouis & Tempe)
3	RCGA Green Business Challenge	\$ 395	participation fee, network/establish resources
4	Improve existing recycling program	\$ 100,000	provide more convenient containers/locations/education signage
5	Compost food waste	\$ 10,000	annual cost - decreases trash and disposal usage/damage
6	Biodegradable containers & utensils	\$ 104,000	additional cost/year (current cost = \$237K/yr, sustainable option = \$341K/yr)
7	Irrigation system improvements audit	\$ 11,000	determine possible water efficiency improvements
8	Vending case energy efficient lighting	\$ 16,000	(35) snack/food machines, soda not included
	Proposed Total:	\$ 434,595	

ACCOMPLISHMENTS since 2012...

- Internal website
- Eliminated Styrofoam
- Green e-mailbox
- 5-year Business Plan
- Corporate Policy
- Annual Arbor & Earth Day Expo
- Created new logo
- Incorporated composting
- Established waste diversion program
- Etc...



Edward Jones®

Edward Jones®
MAKING SENSE OF INVESTING

Environmental Sustainability Policy





...FEEDBACK!!!



What our associates valued the most was being informed!

Information overload...

Did you know?

We were tracking waste at the United Way Trivia Night on 9/8?

The 2017 United Way Trivia Night was the first in the event's history that utilized composting service and dedicated waste stations for participant use during the event. While there was significant success in diverting waste from the landfill, there is still room for improvement as we continue to expand and develop the firm's sustainability initiatives.

RESULTS FROM THE EVENT:



900

Edward Jones associates, friends, and family members present



RECYCLING

1,750

Approximate gallons of waste recycled



COMPOST

95

Approximate gallons of waste composted



LANDFILL

1,150

Approximate gallons of waste sent to landfills

GREEN TIPS

Interested in assisting with sustainability related events in the future? Please contact us at greenmail@edwardjones.com



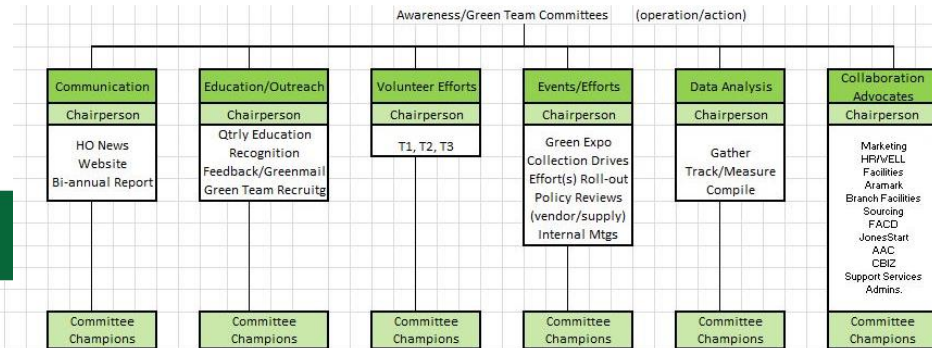
September 2017

Questions? Please contact greenmail@edwardjones.com

Edward Jones



U.S. Home Office Sustainability Report: January 2018



Competencies:	Assist committee chairperson(s) with managing and accomplishing scope of work					
Drives for Results		x	x	x		x
Plans & Organizes	x	x	x	x	x	
Thinks Strategically		x				x
Uses Seasoned Judgement	x				x	
Builds Relationships		x	x			x
Collaborates	x	x	x	x	x	x
Communicates Openly	x	x		x	x	x
Engages & Inspires	x	x	x	x		x



Edward Jones[®]

Lisa.Johnson@edwardjones.com

Edward Jones | Facilities

Project Leader

314-515-9110