

ROLLING OUT A MULTI-SITE RECYCLING PROGRAM



12-10-14

Shar Wiesehan/Ron Hall

AMEREN CORPORATION

- Parent Company
 - Ameren Missouri based in St. Louis, MO
 - Ameren Illinois based in Collinsville, IL
- Providing energy service
 - 2.4 million electric customers
 - 900,000 natural gas customers



BUILDING SERVICES

- Responsible for facility management at 135 sites throughout Missouri and Illinois
- Facility managers are located in:
 - Belleville, Collinsville, Decatur, Pawnee, Peoria, IL and Jefferson City, St. Louis, MO

Plan

- Strategy
- Negotiated waste/recycling contract
- Assistance from janitorial contractors
- Communication
- Training
- Implementation
- On-going promotion



STRATEGY

- Implement a recycling program
 - Cost neutral - reduce landfill costs by right sizing containers and reducing tonnage through recycling
- Waste/recycling contractor hired
- All operating centers/office buildings would participate
- Recycling champs identified at each site
- Desk side containers would become single stream recycling containers
- Centralized trash – kitchens, conference rooms
- Containers labeled as Single Stream Recycling or Landfill
- Promotion/communication
- Implementation

NEGOTIATED WASTE/RECYCLING CONTRACT

- Partnered with vendor to manage waste/recycling
- Waste – look to reduce number of containers & frequency of pickup
- Recycling – key role in rolling out a single stream recycling process for Ameren, including communication/training
 - Contracted with a sub-contractor to assist with recycling pick up (not many SSRs in IL)
- Identified toter/front loader needs by site
- Developed roll out schedule

ASSISTANCE FROM JANITORIAL CONTRACTORS

- WebEx to discuss waste/recycling process
- Assisted in rolling out plan
- Performed assessment of buildings
 - Determined number and size of landfill/recycling containers needed
 - Determined number of decal labels that would be required
- Ordered, placed and labeled containers



COMMUNICATION

(Be mindful of copyright laws)

- “Recycling Is Coming” poster developed by waste/recycling vendor-distributed to all sites
- Four weeks prior to roll-out, weekly communication to employees via email (included roll-out schedule)
- Recycle champs/facility managers sent information via email to encourage employee participation at each site
- Building Service website expanded
 - Frequently Asked Questions document posted
 - What Is And Isn't Recyclable document posted
 - Video posted from SSR vendor showing how plant works
 - Roll out schedule posted

Sample Roll Out Schedule

Single Stream Recycling Roll Out

Recycling Begins	Missouri Divisions	Illinois Divisions
12/06/2010	River Bluffs & Meramec Valley	I
12/13/2010	SEMO	II
01/10/2011	Central Ozarks	III
01/17/2011		IV
01/24/2011	Boone Trails	V
01/31/2011	Archview & Gateway (GOB complex)	VI
02/07/2011	Missouri Valley	

Additional locations will roll out during the first quarter of 2011.

TRAINING (prior to roll-out)

- Developed a training PowerPoint presentation that included:
 - How the process works & why it is important
 - Video from SSR contractor
 - Frequently Asked Questions document
 - What Is & Isn't Recyclable document
- Trained
 - Building Service (Facility Managers & Admin staff)
 - Recycle Champs
 - Janitorial Contractors
 - On site staff

IMPLEMENTATION

- Week prior to roll-out
 - Janitorial contractor places containers where needed inside building
 - Janitorial contractor labels all containers with appropriate decals
 - Waste hauler/recycling sub-contractor placed front loaders/toters inside/outside building
 - On-site training with employees conducted by waste/recycling contractor and facility managers

ON GOING PROMOTION

- Continue to update the What Is and Isn't Recyclable document as required
- Created signage that is placed on desk chair when we are unable to recycle contents of desk side container
- New signage placed in centralized locations
- Update recycle champ list
- Bi-weekly email communication with recycle champs
- Short video produced that focused on residual waste. Developed with senior leadership support. Distributed to employees.

Video



SAMPLE SIGNAGE LEFT ON DESK CHAIR WHEN CONTENTS ARE NOT RECYCLABLE



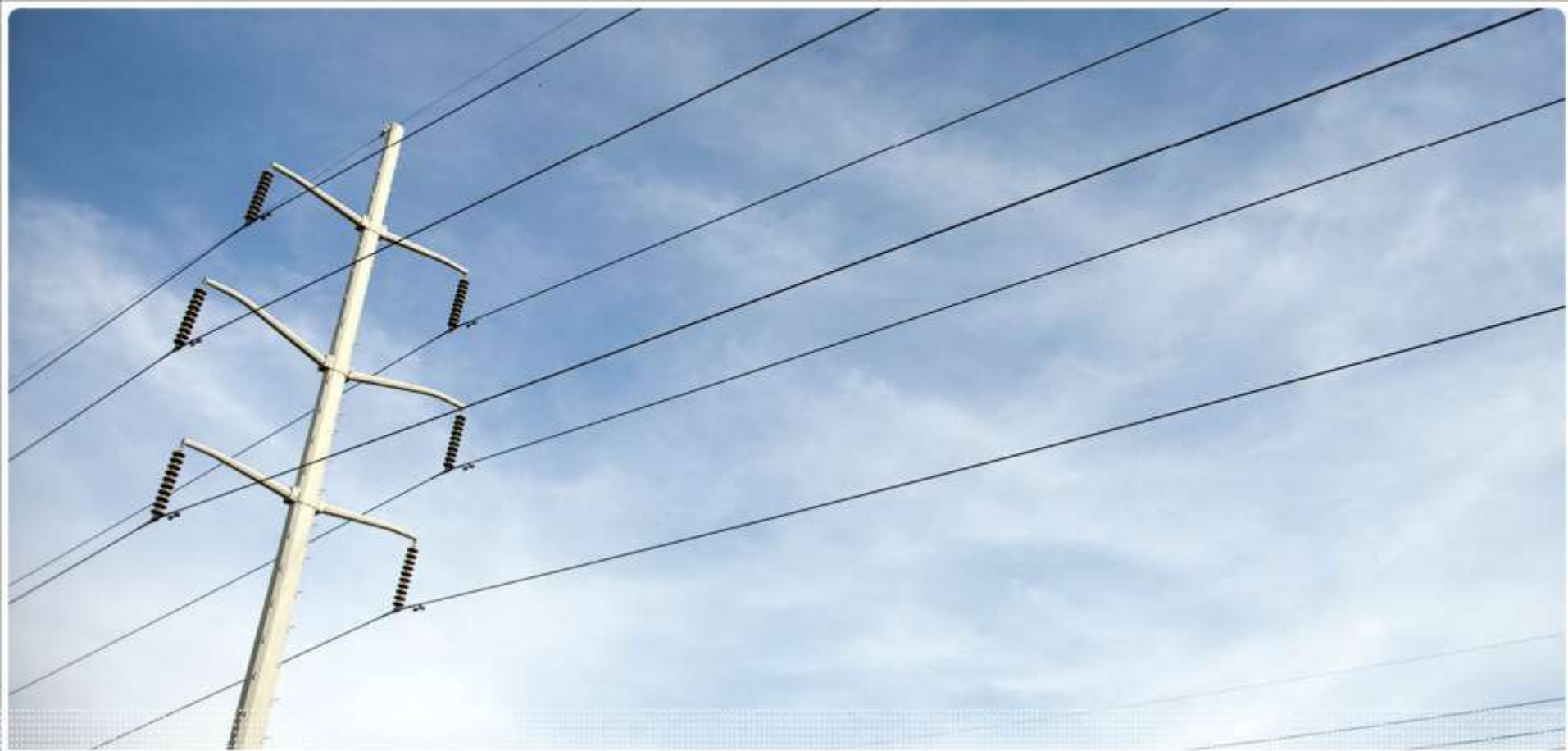
Unfortunately the contents of your trashcan had to be sent to a landfill.

Single stream recycling does not include:

- **Liquid**
- **Styrofoam**
- **Hygiene waste**
- **Food waste**
- **Chip bags**
- **Candy wrapper**

Your cooperation in meeting Ameren's sustainability efforts is greatly appreciated.

If you questions, please contact Building Services at 314-554-2722.



2014 BIODIVERSITY STRATEGIES



12-10-14

Shar Wiesehan/Ron Hall

World Bird Sanctuary

- Our partnership with the Wild Bird Sanctuary
 - Peregrine falcon nesting box at Sioux Energy Center where we have a camera set up where you can watch the mother and father take care of the fledglings until they take off.
 - They also band the birds to track their migratory patterns
 - <http://www.ameren.com/FalconWatch/Pages/FalconCam.html>
 - Installed Swan-Flight diverters and nesting boxes



Landscaping Design For Sustainability

- Conducted a quantitative survey of our General Office Building.
 - Identified invasive and non-native species
 - Identified areas where we could convert turf grass to native grasses and butterfly gardens
 - With this data we can identify species to be replaced as needed and budget allows.



QUESTIONS?