



# Waste Management Program

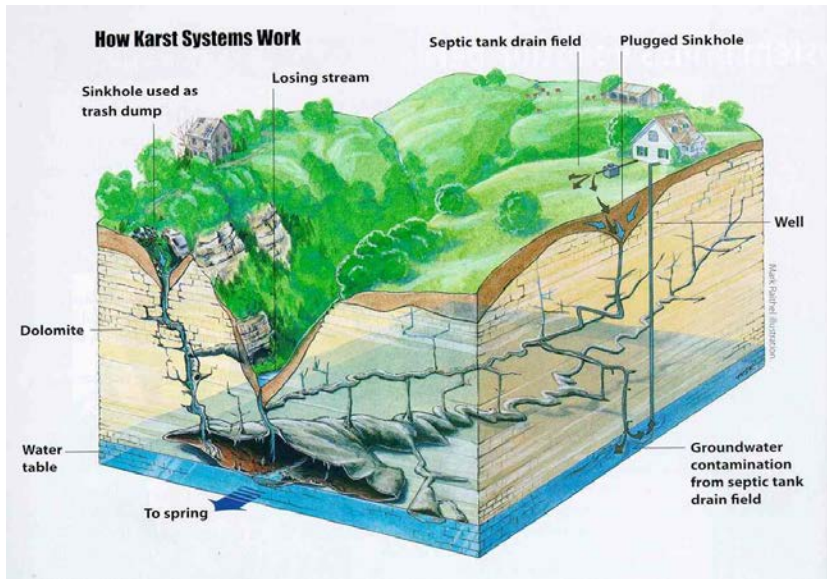
Chris Kalter  
Environmental Specialist

## **2003 Beck Report Identified**

**70% of the waste going into local landfills comes from  
the commercial sector**

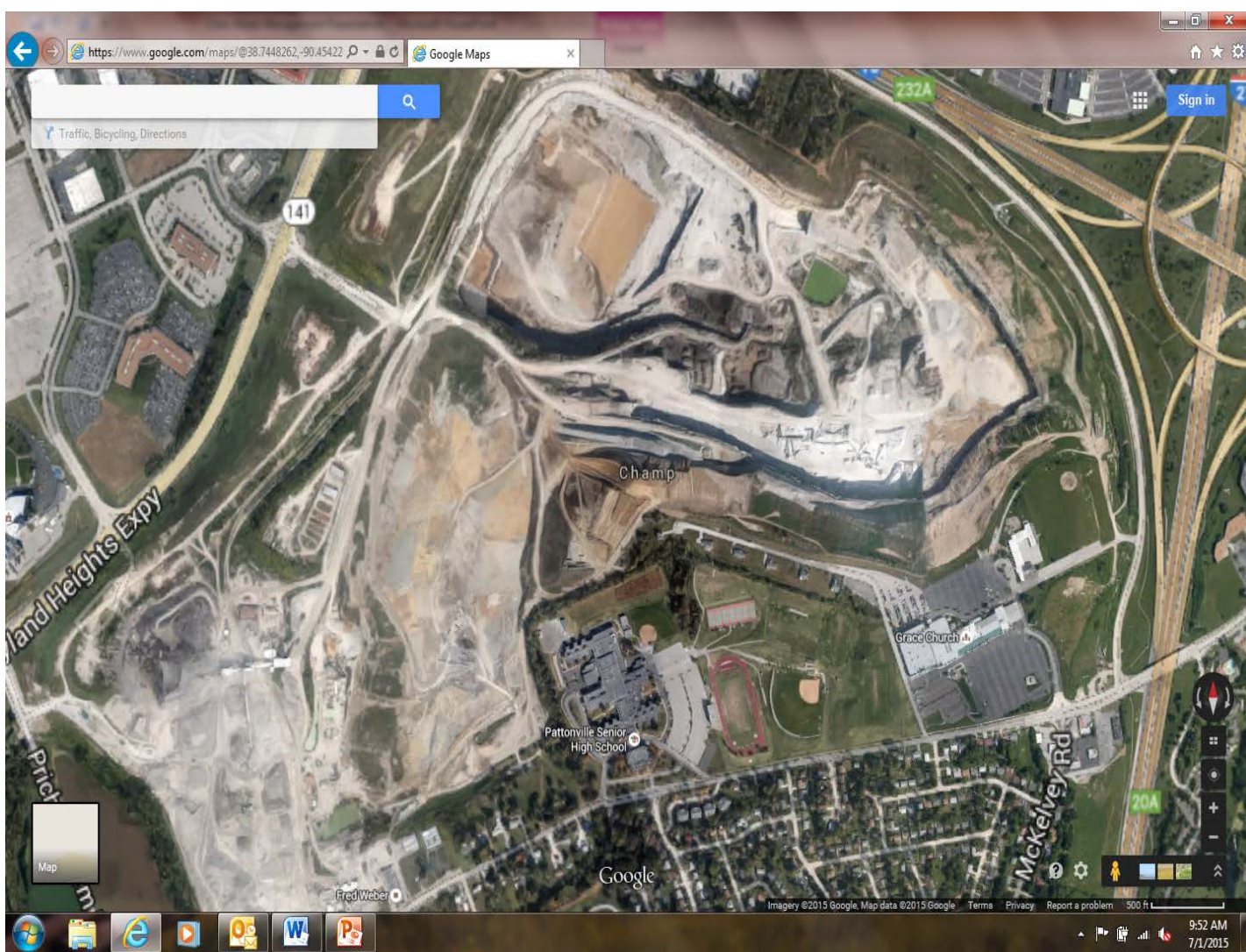
# **90,000 Businesses in St. Louis County**

**2010 U.S. Census Bureau**

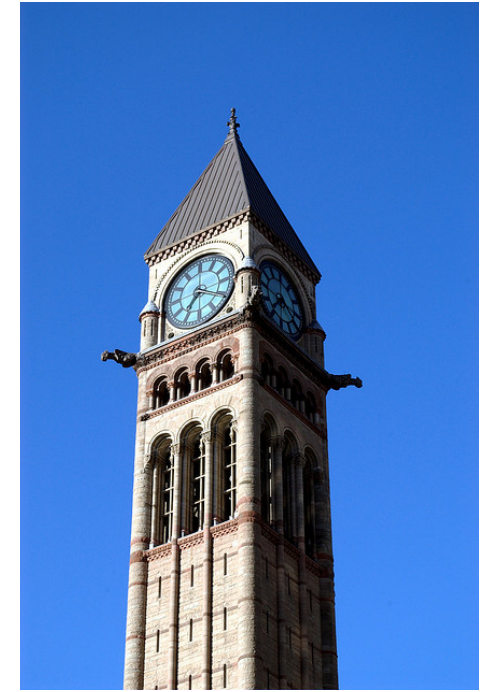
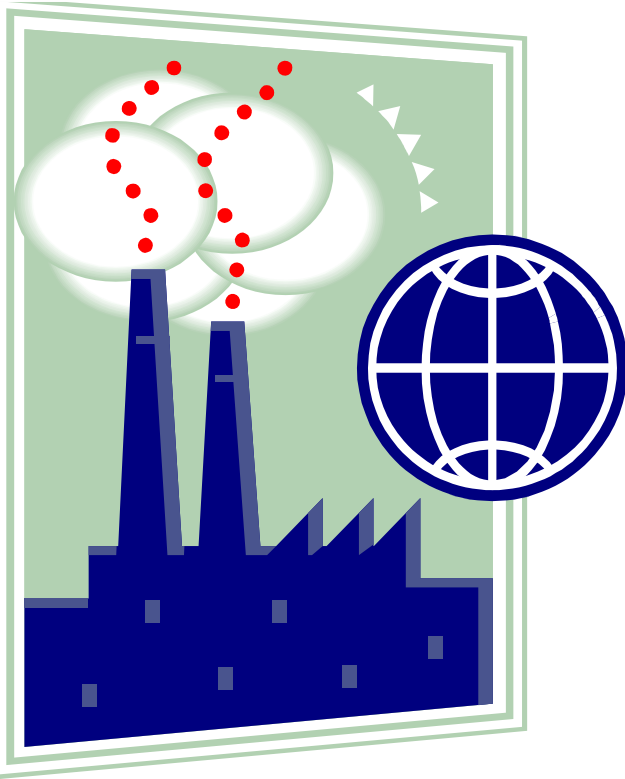


What do landfills do?





**Reducing Waste = Fewer landfills in the future = Better groundwater protection**



# Integrated Waste Management Plan (IWM)

Solid Waste – Energy Efficiency – Water Conservation

# Phase 1 – Collecting Background & Contact Information



## Contact Information:

- ✓ Official Name of the company
- ✓ Company website
- ✓ Contact person and contact information
- ✓ Type of Business
- ✓ Franchised?
- ✓ Leased or owned?





- ✓ If Leased what is included in the lease?
  - Trash
  - Recycling
  - Custodial
  - Landscaping
  - Building maintenance
- ✓ Type of Building
  - High-rise or multistory
  - Strip mall
  - Stand alone
  - Campus/multiple buildings
- ✓ Are there other tenants?
- ✓ Do you have a “green” team?

# Phase 2 - Contracts, Floor Plans, & Waste Stream

## Waste contracts –

- Frequency of pickup
- Day of the week
- Price
- Dumpster size
- Additional fees
- Other waste services

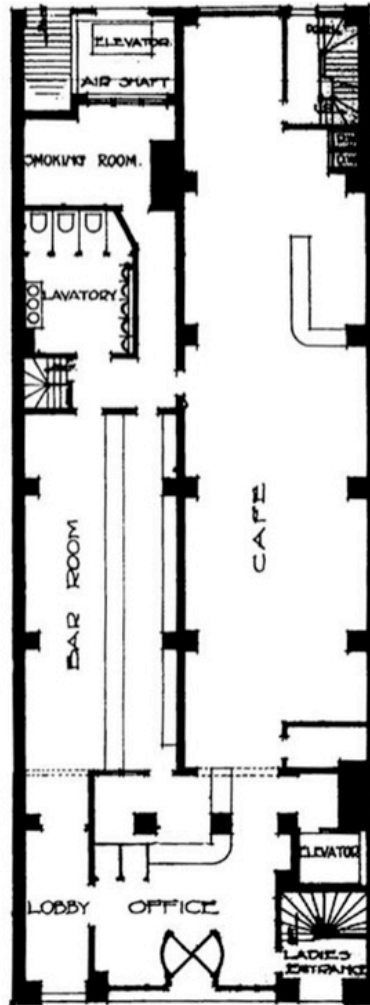


# How does all of the “stuff” get from the desk to the dock?

## Custodial contracts

- Vendor or staff
- What supplies and services are covered?
- Required training
- When do they empty containers?

# Floor plans



- ✓ Map your bins – trash, recycling, and organics
- ✓ Internal and external (dumpster & public space bins)

# What's in your waste stream?

## **Office:**

### Paper –

Newspaper  
Magazines  
Soft cover books  
Mixed office  
Folders  
Envelopes  
Food packaging  
Cardboard  
Calendars  
Paper plates  
Paper bags

### Metal

Aluminum cans, foil, trays  
Tin cans

### Glass

Bottles & Jars

### Plastic

Containers

### **Cartons – New Category**



## **Facility:**

Universal Waste -

Batteries

Light Bulbs

Pesticides

Thermostats

Mercury containing lamps

Hazardous waste/chemicals

Biohazards

Confidential Materials

Electronics

Textiles

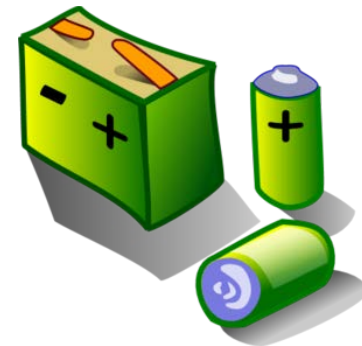
Furniture/appliances

Fleet

Organics

Plastic film/bags

Hard cover books



# Phase 3 - The Assessment

One week -

- ✓ Dumpster Survey
- ✓ Internal Bin Survey
- ✓ External Bin Survey
- ✓ Shadow Custodial Team

# Identify

- Additional Sources of Waste or Diversion
- Do you have the ability to track incoming materials?
- Do you have any “green” policies or practices in place?
- Dumpster Dive?





## Survey your staff

- ✓ Staff perception and opinion
- ✓ Staff understanding of the program
- ✓ Feedback on how things are going
- ✓ Ideas for potential change

# Phase 4 - Reporting and telling your story

Recycling Dumpster Survey by Location								
Location	Dumpster size	Pickup frequency	Month 1 cubic yards	Month 2 cubic yards	Month 3 cubic yards	Month 4 cubic yards	Total cubic yards	Tons
<b>New Health Building</b>	8	2x/week	0	0	34	0	34	2.19
<b>Queeny Park – Greensfelder Rec.</b>	6	1x/week	6.9	0	0	0	6.9	0.45
<b>South County Satellite Office</b>	4	2x/week	14	5	9	8	36	2.32
<b>Spirit Airport</b>	8	2x/week	24	30	0	0	54	3.48
<b>Highways and Traffic Dist. 3</b>	8	1x/week	8	10	10	6	34	2.19
<b>Lakeside</b>	8, 8, 8	1x/week	60	46	52	38	196	12.64
<b>MET Center</b>	8	1x/week	20	10	0	0	30	1.94
<b>Division of Workforce Development</b>	4	1x/week	3	11	9	7	30	1.94
<b>Roos Building</b>	8, 8	4x/week	136.8	94	152	10	392.8	25.34
<b>Total</b>							<b>813.7</b>	<b>52.48</b>

# What do I do now?



## ✓ Bins & Dumpsters

- Are your internal bins placed correctly and do you have enough of them?
- Are your external containers the right size and is the frequency of pickup appropriate?

## ✓ Custodial team

- Do they have the right equipment for their job?
- Do they have suggestions for improving the program?
- Do they need additional training?

## ✓ What does your staff need?

- Staff champion – someone needs to steer the boat
- Ongoing training/education
- Signage
- Policies
- Email reminders
- Floor captains
- New employee orientation
- Implement new technologies



Tell your story



Stories.

Connect.

People.

# Questions?

[www.RecycleSaintLouis.com](http://www.RecycleSaintLouis.com)

Chris Kalter

314-615-8933

[ckalter@stlouisco.com](mailto:ckalter@stlouisco.com)

**Thank You**